



# FEDERAL DEMONSTRATION PARTNERSHIP

Redefining the Government & University Research Partnership

## Federal Demonstration Partnership (FDP)

An activity convened by the Government-University-Industry  
Research Roundtable (GUIRR) of the National Academies of  
Sciences, Engineering and Medicine

January 8, 2020

John Leonard

FDP Faculty Representative

Professor and Executive Dean  
College of Engineering  
Virginia Commonwealth University



# FDP Mission

## *Researchers doing science, not administration*

- Association of federal agencies, academic and nonprofit research institutions, and research policy organizations that work together in a collaborative initiative to streamline the administration of federally sponsored research
- Improving the productivity of research without compromising its stewardship
- A unique forum for individuals from universities and nonprofits to work collaboratively with federal agency officials to improve the national research enterprise



# HISTORY OF THE FDP



Phase VI: 2014-2020



Phase V: 2008-2014

Phase IV: 2002-2008



Phase III: 1996-2002

Phase II: 1988 Federal Demonstration Partnership



Phase I: 1986 Florida Demonstration Project



Pre-FDP: 1985 Hearing and Report by GUIRR





# Where and When

- Meet three (3) times a year: September, January, May
  - Some times Sunday – Tuesday... Sometimes Wednesday – Friday
  - Always in Washington DC
- Future Dates:

2020: Jan 8-10, May 20-22, Sept 9-11 *Marriott Wardman Park*



# Membership

- 154 institutional recipients of federal funds
  - Includes 38 new members (Phase VI)
  - Includes 26 Emerging Research Institutions
  - Each university has 3 formal, institutional representatives: Administrator, ERA/Technical and faculty reps.
  - **VCU: Sue Robb (Admin), John Leonard (Faculty), open (ERA/Technical)**
- 10 Federal Agencies
  - NSF, NIH, ONR, USDA, AFOSR, ARO, AMRMC, NASA, EPA and DHS



# Membership

## Federal Agency Representatives

Federal Agency	Administrative Representative	Program Representative
Air Force Office of Scientific Research (AFOSR)	Marion Faulhaber marion.faulhaber@us.af.mil	
Army Research Office (ARO)	Kevin Bassler kevin.j.bassler.civ@mail.mil	
Department of Agriculture (USDA)	Robert Magill Robert.magill@usda.gov	Margo Holland mholland@nifa.usda.gov
Department of Homeland Security (DHS)	Heidi Custer Heidi.Custer@HQ.DHS.GOV	
Environmental Protection Agency (EPA)	Alex raver Raver.Alexandra@epa.gov	Darrell Winner winner.darrell@epa.gov
National Aeronautics & Space Administration (NASA)	Antanese Crank antanese.n.crank@nasa.gov	Linda Sparke linda.s.sparke@nasa.gov
National Institutes of Health (NIH)	Michelle Bulls michelle.bulls@nih.gov	Laura Moen moenl@mail.nih.gov
National Science Foundation (NSF)	Charisse Carney-Nunes CCARNEY@NSF.GOV	
Office of Naval Research (ONR)	Debbie Rafi debbie.rafi@navy.mil	
Army Medical Research and Materiel Command (AMRMC)	Carolyn Keeseman carolyn.r.keeseman.civ@mail.mil	



# Membership

Institutional representatives are expected to:

- Attend FDP meetings on a regular basis
- Participate on **committees**
- Suggest **activities**
- Serve as **advocates** for their institutional colleagues

Expenses for  
attendance are borne  
by the institutions



# How it all works

- Information exchange: At regular meetings, university faculty and administrators talk face-to-face with decision-makers from government agencies that sponsor and regulate research. (FDP -> UIDP)
- Common and best practices identified and shared.
- Demonstrations - testing new ways of doing things in the real world before fully implementing across all universities.



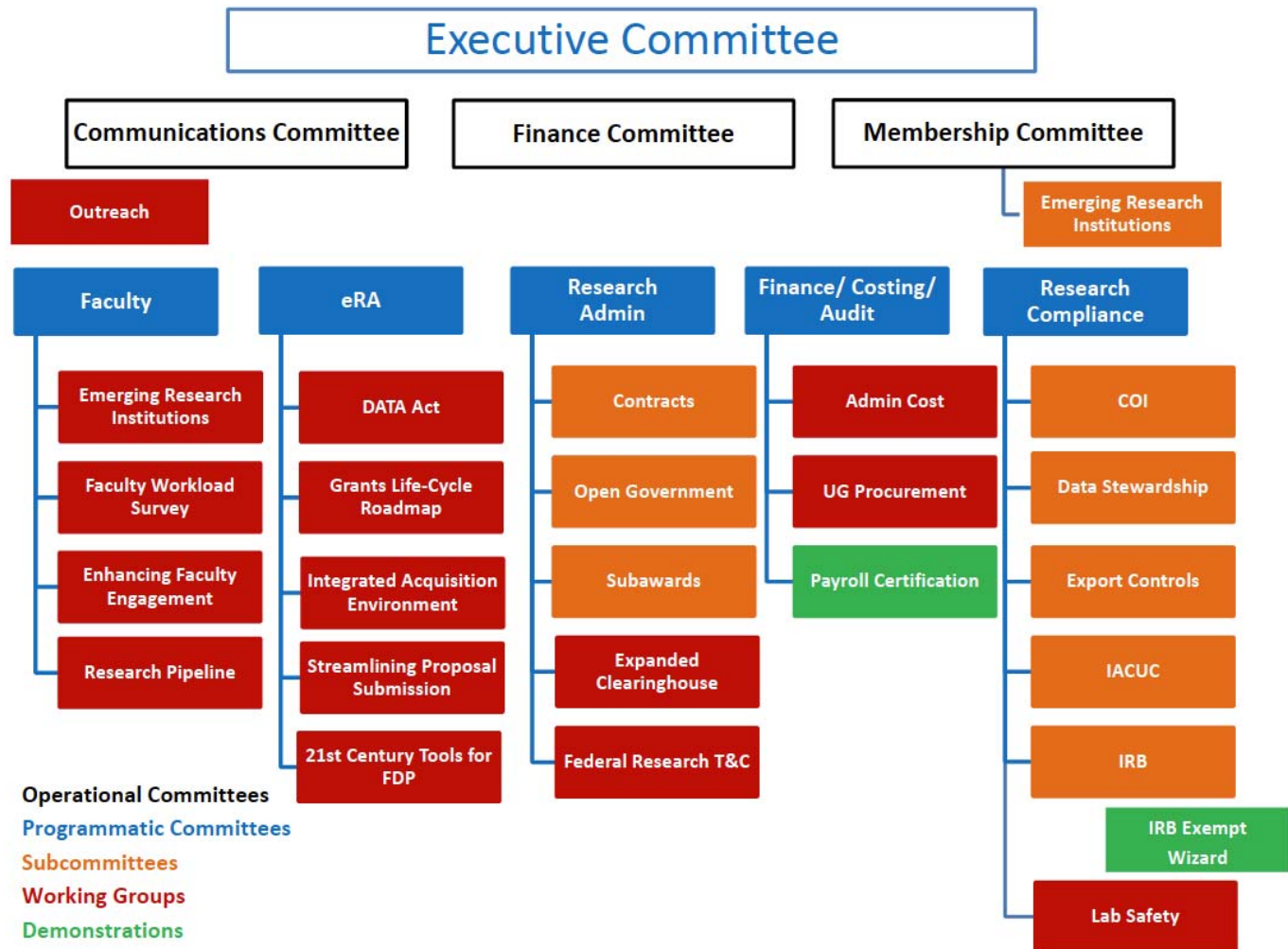


# How it all works

- **Demonstration** - Test new ways of doing things in the real world before putting them into effect.
- **Pilot Project** - an exploratory activity that furthers the FDP's mission to streamline administration.
- **Initiative** - an exploratory activity that furthers the FDP's mission to streamline the administration.
- **Study** - to provide specific information.



# Organizational Structure





# History of Success

- Expanded Authorities
- FDP Subaward Agreement
- Standard Government-wide Terms and Conditions
- Faculty Workload/Administrative Burden Survey
- FDP Clearinghouse for FCOI (now Expanded Clearinghouse)
- FDP as key sounding board for Research Business Models Subcommittee of the Committee on Science, grants.gov, research.gov, etc.
- Congressional Testimony on Administrative Burdens



# Current Activities

- Expanded clearinghouse for sub-award information
- Rolling out the third Faculty Workload Survey
- (FACT) Faculty-Admin Engagement
- Uniform Guidance issues
- IRB Wizard
- Current issues (e.g., Foreign Influence)



# Faculty Committee

- Serves as the forum for faculty representatives to discuss and develop faculty input on all FDP activities and FDP administration.
- The Committee meetings are used to share information from other operational and programmatic committees.
- Opportunity for faculty to incubate and develop new activity proposals.
- As needed, the Faculty Committee develops surveys of faculty at member institutions to garner necessary information to direct proposed activities.



# Faculty workload survey

## 2018 FWS Purpose

Re-assess and update estimates of federally-funded researchers' administrative workload, following 2012 and 2005 surveys.

Provide empirical input toward a better understanding of focus areas for

- streamlining research administrative workload,
- making federally-funded research processes more efficient, and
- allowing greater focus on the science of the research.





# Faculty workload survey

## Comparison of FWS Response Rates

A series of 3 surveys of Principal Investigators (PIs) on federally-funded projects which asked about time taken away from research by administrative and related requirements.

Period Assessed	FDP Organizations	PIs Invited	Participants	Response Rate
AY2004-2005	74% (73 of 99)	23,325	6,081	26%
AY2010-2011	83% (99 of 119)	53,428	12,816	24%
AY2016-2017	72% (111 of 154)	56,869	11,167	20%



# VCU faculty workload

45%





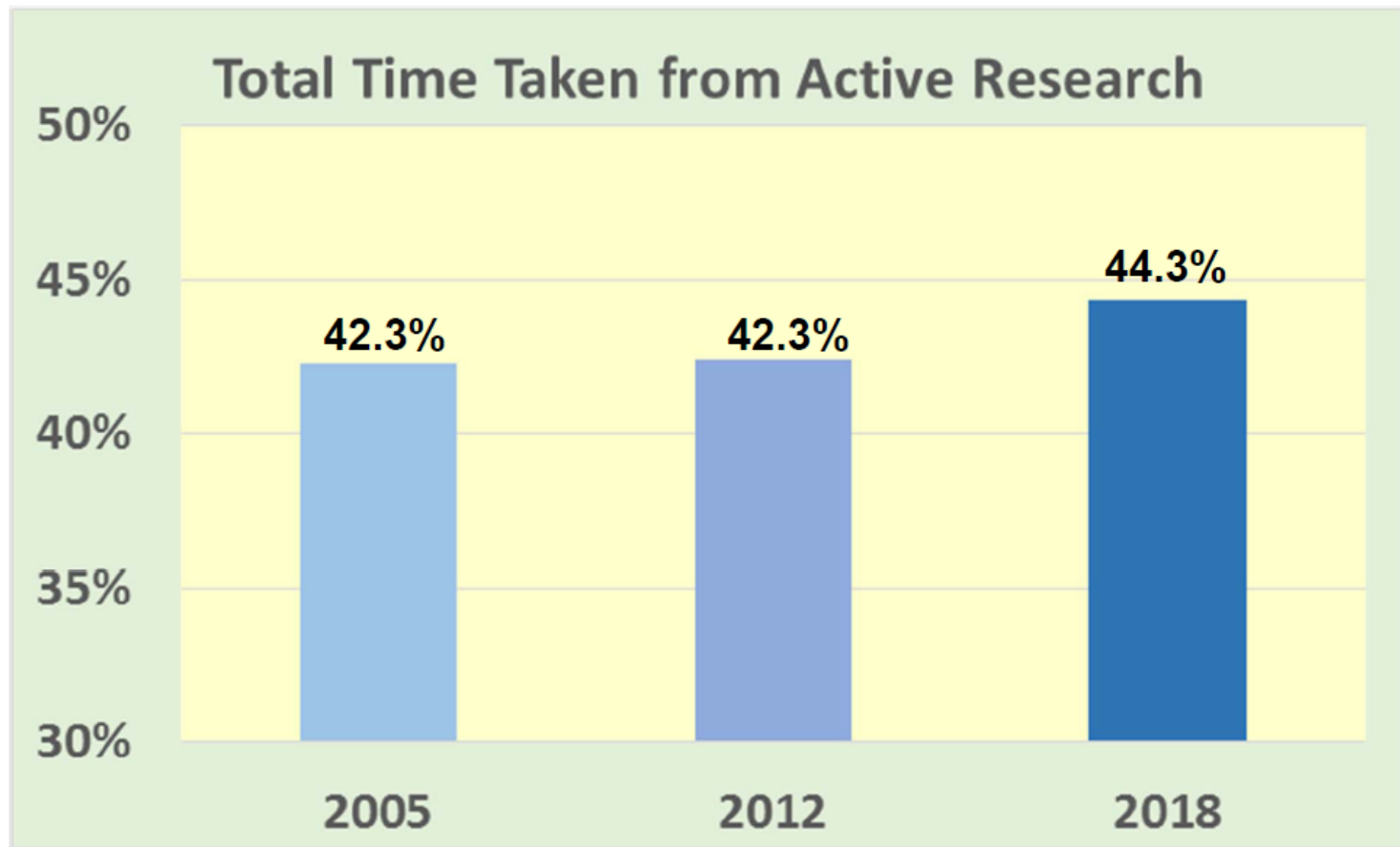
# VCU faculty workload

- At VCU, federally funded investigators spent 44.6% of their research time on administrative and related requirements and NOT on direct research.
- This value (44.6%) is comparable to other ML category respondents (46.6%) and the overall survey respondents (44.3%)
- The overall value (44.3%) is up from both the 2002 survey (42.3%) and the 2012 survey (42.3%)



# VCU faculty workload Overall burden over time

## Time Taken Away from Research





# VCU faculty workload

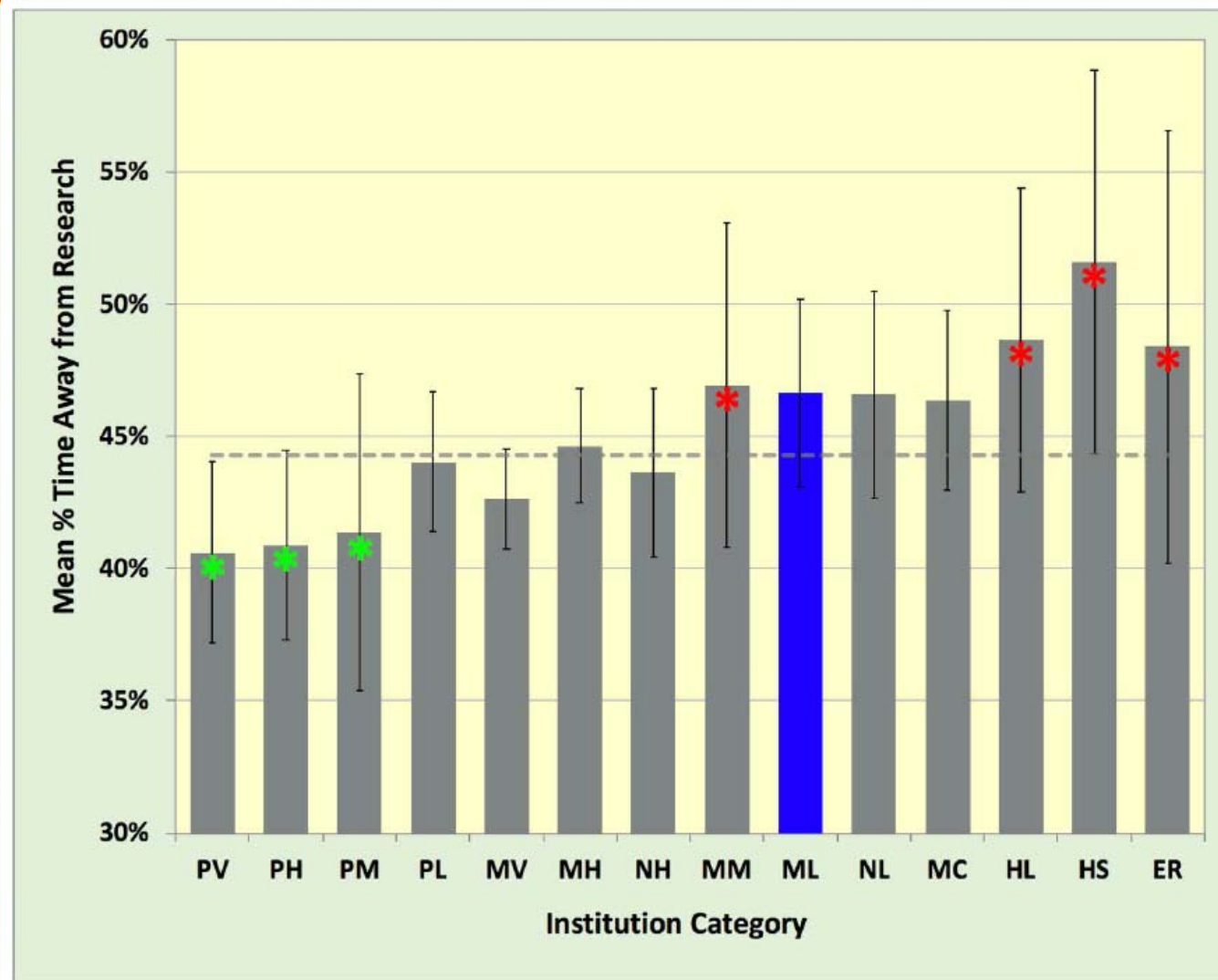
## Peer institution categories

**Table 1. Fourteen Institution Categories Adopted for Reporting FDP Institution Results**

Code	Institution Category Legend	# Institutions	# Respondents
PV	VHR Private Very High Research Expenditures (>\$900M)	6	855
PH	VHR Private High Research Expenditures (\$500-899M)	7	989
PM	VHR Private Medium Research Expenditures (\$300-499M)	7	658
PL	VHR Private Low Research Expenditures (\$100-299M)	5	269
MV	VHR Public with Medical School Very High Research Expenditures (>\$900M)	6	1664
MH	VHR Public with Medical School High Research Expenditures (\$500-899M)	10	1782
NH	VHR Public No Medical School High Research Expenditures (\$500-899M)	5	682
MM	VHR Public with Medical School Medium Research Expenditures (\$300-499M)	8	901
<b>ML</b>	<b>VHR Public with Medical School Low Research Expenditures (\$100-299M)</b>	<b>12</b>	<b>1014</b>
NL	VHR Public No Medical School Low Research Expenditures (\$100-299M)	9	490
MC	Medical School/Center or Medical Research Institute	9	631
HL	HR Low Research Expenditures (\$100-299M)	6	426
HS	HR Sub \$100M Research Expenditures (\$60-99M)	6	273
ER	Emerging Research Institute (< \$60M Research Expenditures)	12+	255

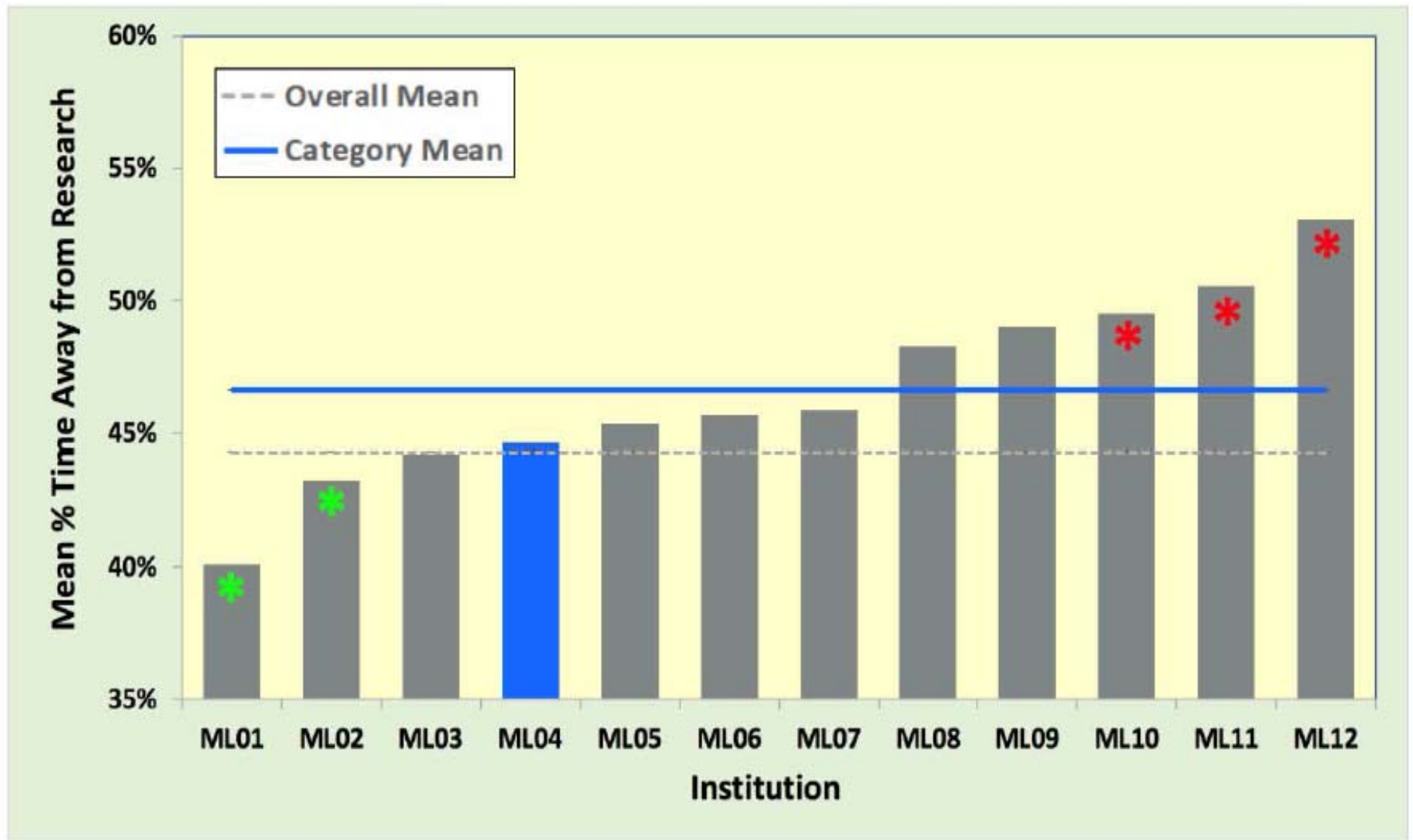


# VCU faculty workload Peers and Time-away-from-research





# VCU faculty workload Peer comparison

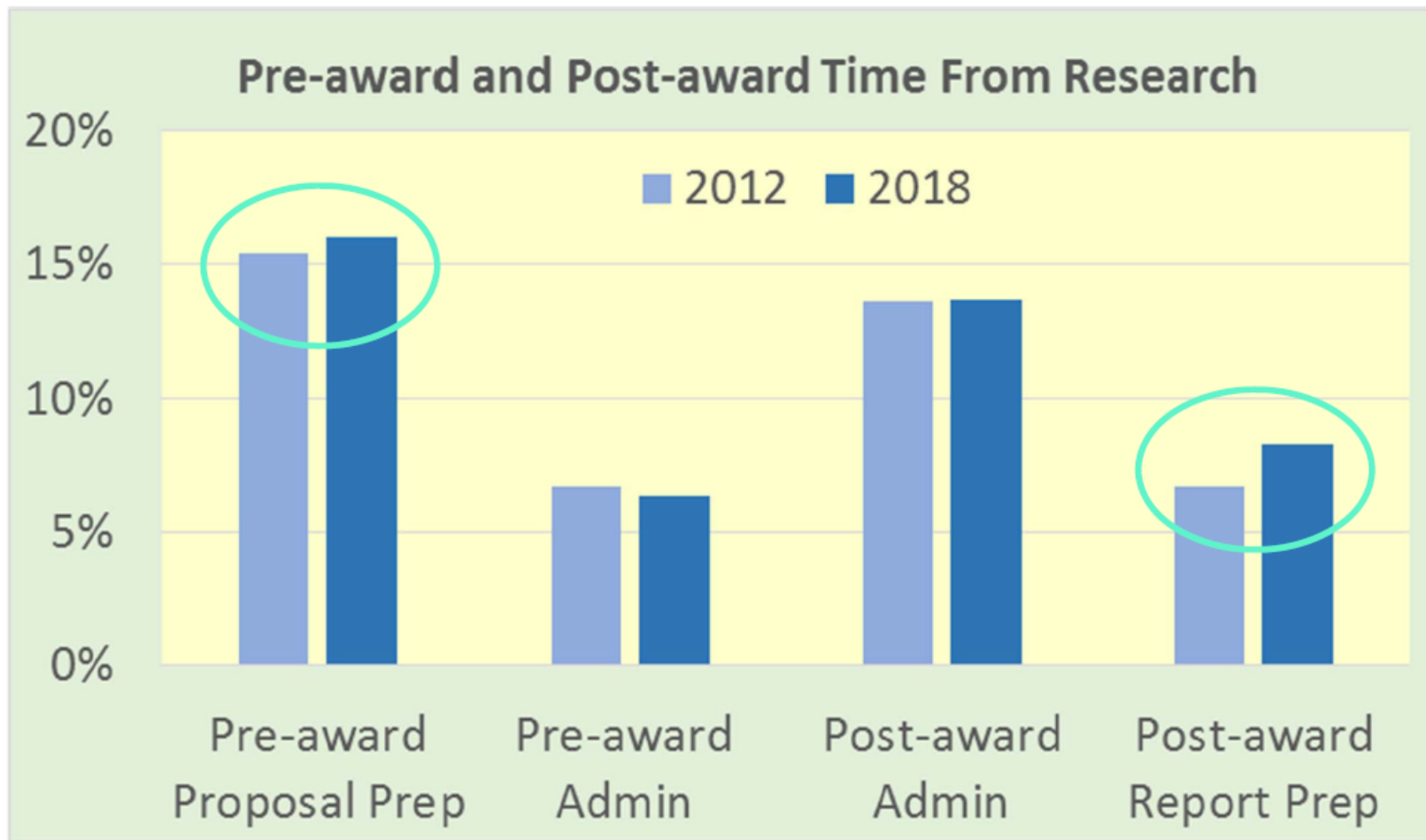




# VCU faculty workload

## Overall time away by task group

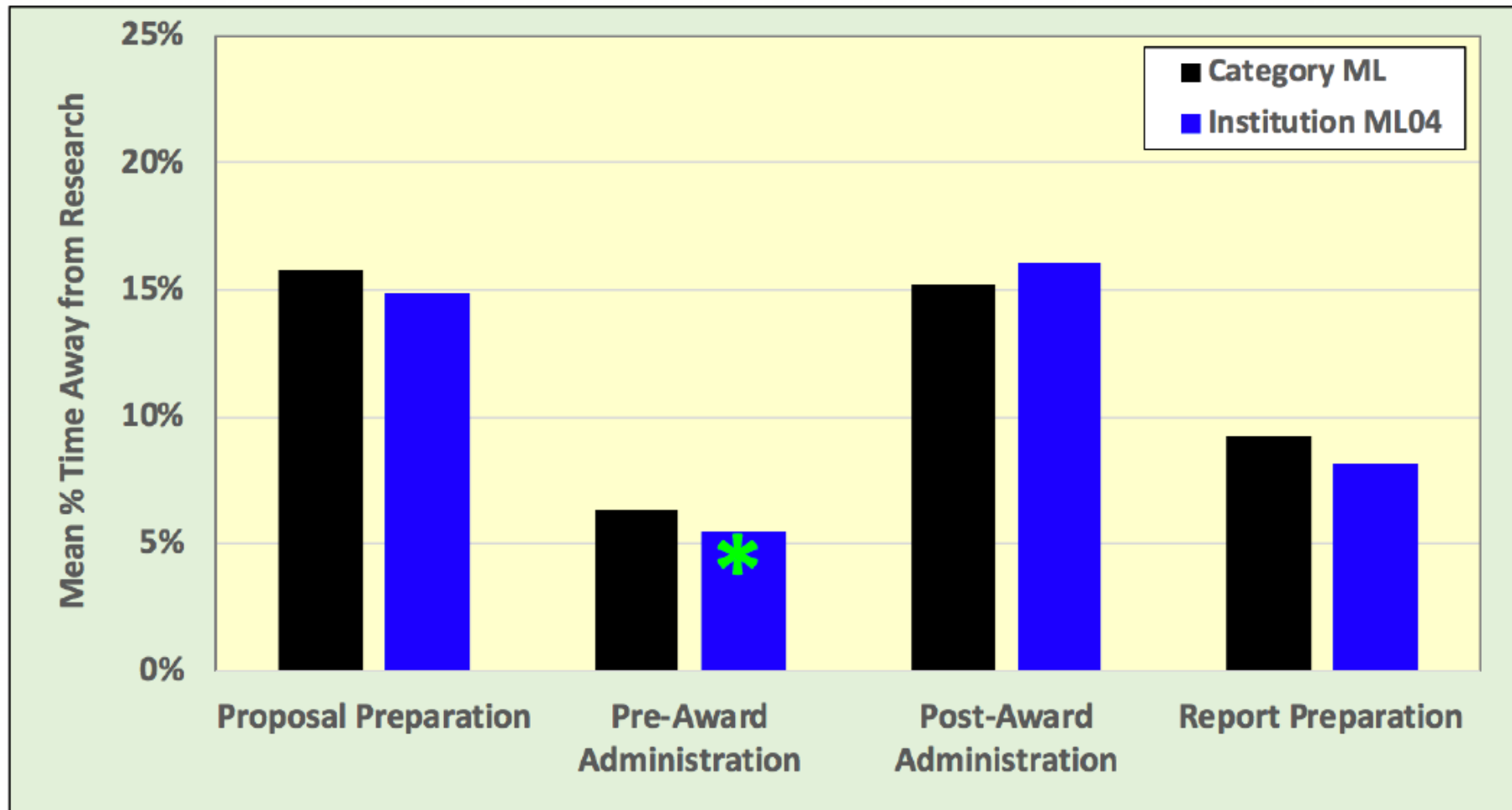
### Time Taken Away from Research





# VCU faculty workload

## Peer time away by task group





# VCU faculty workload

## Respondent characteristics

- 92 PIs responded to 2017 survey. Majority had 12-month appointments, 2/3 were tenured.
- About half are Biological and Biomedical Sciences
- Appointments average 48% research, 19% instruction, 17% service.
- 64% male, 80% white, average age 54
- 75% of time funded by federal sources, NIH most prevalent.
- 75% basic or applied, 70% involved animal or human subjects





# VCU faculty workload

## Research climate

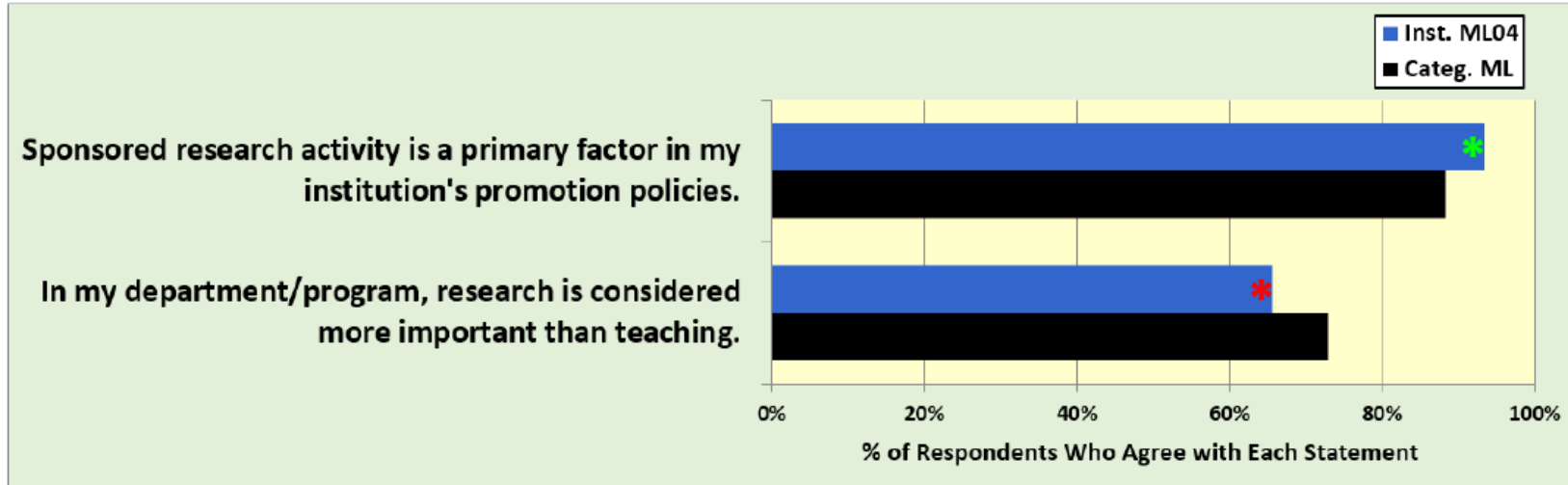


Figure 15. Percentage who agreed with statements regarding priorities on research for Category ML and Institution ML04. Each bar combines the percent of 'Agree' and 'Strongly Agree' responses.



# VCU faculty workload

## Research climate

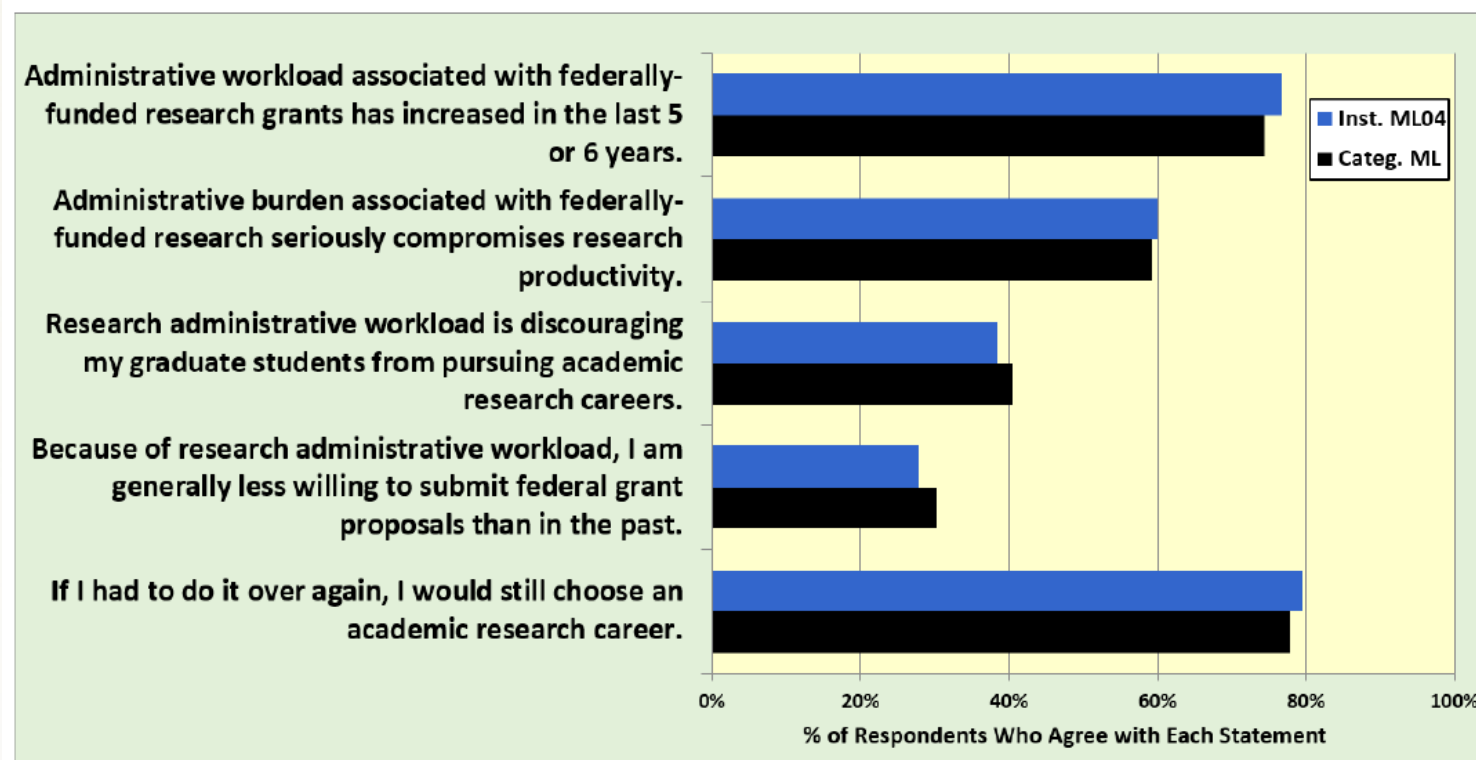


Figure 16. Percentage who agreed with statements regarding the impact of research-related administrative workload for Category ML and Institution ML04. Each bar combines the percent of 'Agree' and 'Strongly Agree' responses.



# VCU faculty workload

## Research climate

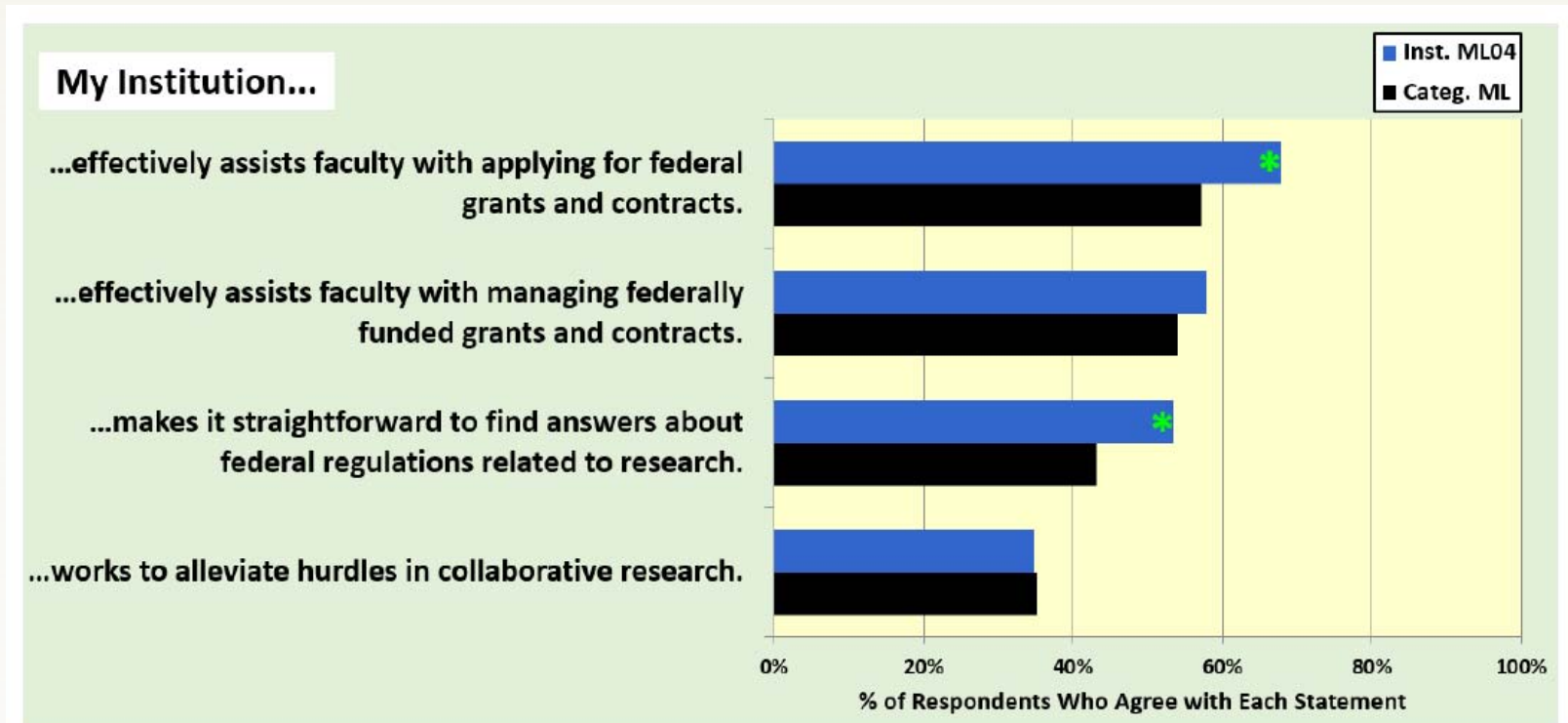


Figure 17. Percentage who agreed with statements regarding institution effectiveness in alleviating research-related administrative workload for Category ML and Institution ML04. Each bar combines the percent of 'Agree' and 'Strongly Agree' responses.



# VCU faculty workload

## Research climate

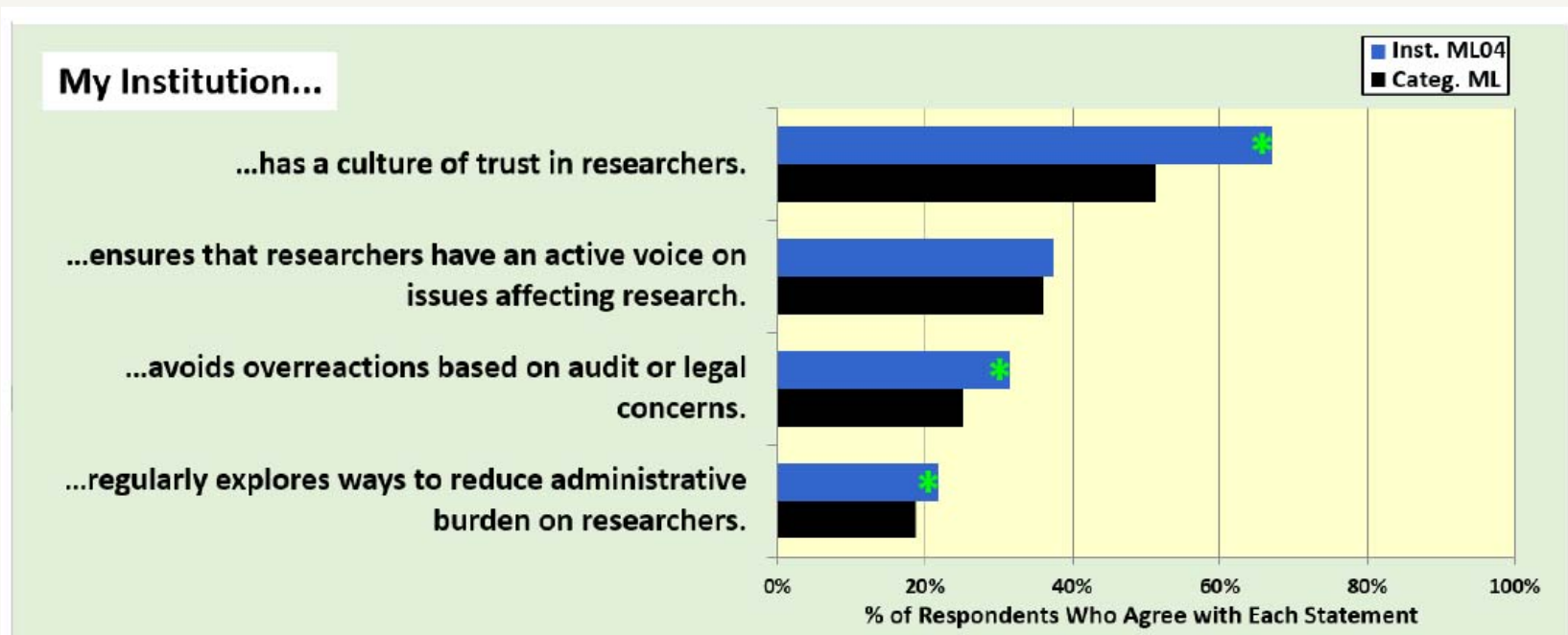


Figure 18. Percentage who agreed with statements regarding the institution's research culture for Category ML and Institution ML04. Each bar combines the percent of 'Agree' and 'Strongly Agree' responses.



# VCU faculty workload

## So what? What next?

- Is 45% representative? Does it feel “right”
  - Is it too high or too low?
  - What is a good number / target?
  - Does this matter?
- What can we expect if we implement change?
- Where do we focus our attention and investment?
  - Centrally? Or locally in the colleges, schools and departments?
  - Do we / how do we engage more faculty?
  - Do we / how do we make changes without setting false expectations?
- What next?